



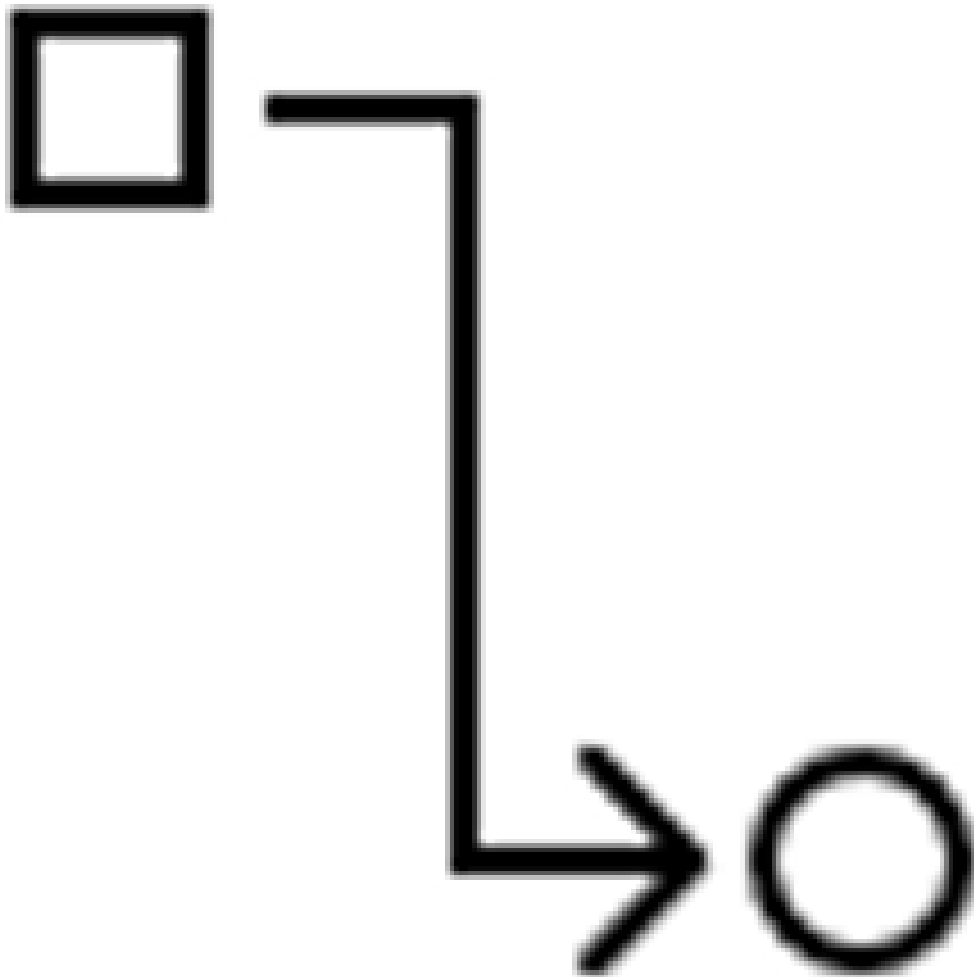
# Sharebox

Appendix: s-series kiosk Health, Safety, Environmental (HSE), legal, and insurance



# Release Notes

**V1.00 - 19 Nov 2024: Original release**



### **Purpose and scope:**

This appendix procedure describes Health, Safety, Environmental (HSE), legal, and insurance issues related to handling and installing the Sharebox s-kiosks.

For the on-site installation of the s-kiosk, it is mandatory to read and understand all seven step-by-step installation instructions.

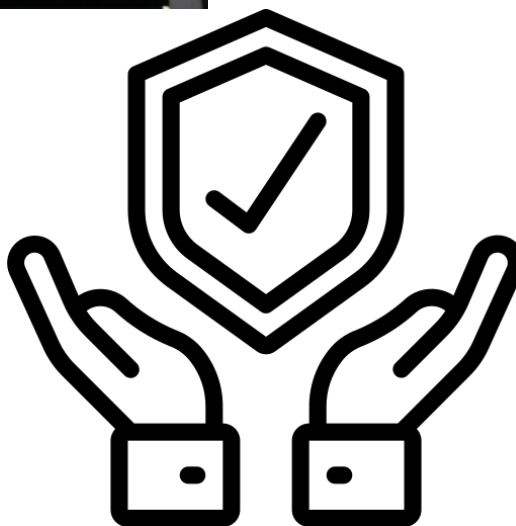


## Health, Safety, Environmental (HSE)

Be aware of the following potential hazards when installing the Sharebox s-series kiosk:

- When lifting and placing the kiosk, there is a risk of getting crushed, unless extra care is taken.
- When lifting and placing the kiosk, there is a risk that the kiosk can tumble over.
- There is a risk of crushing fingers when opening the door.
- There is risk of high voltage shock if the the power circuit is not shut off.

Always use certified safety equipment and clothing.



## Legal and insurance

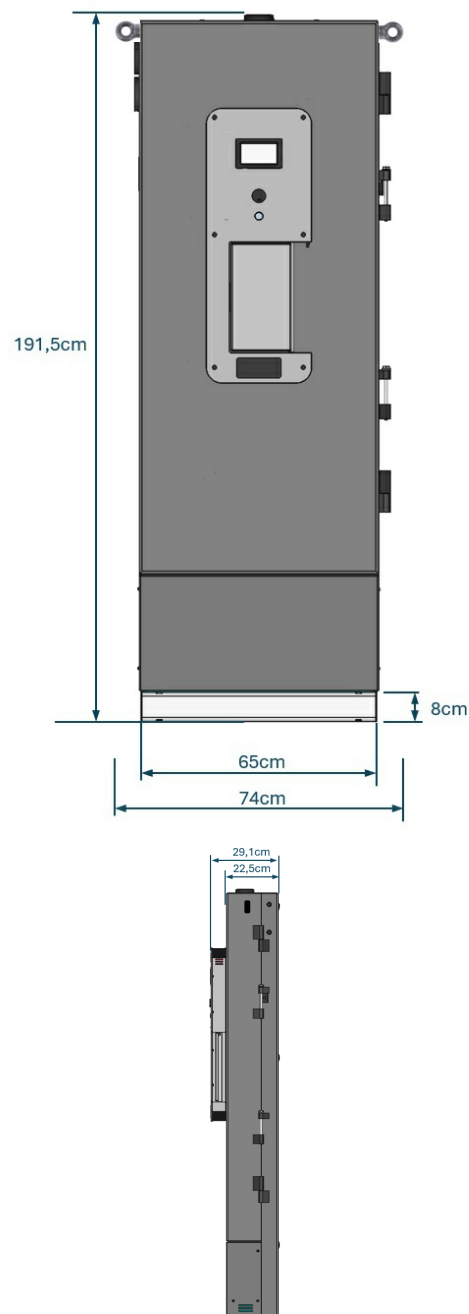
### Anchoring

The Sharebox s-kiosk, concrete base and metal base must be installed with anchoring to ground and/ or wall. Anchoring reduces the risk of the kiosk tipping over and thus reduces risk of injury or harm by crushing or being trapped.

### Insurance compliance

For insurance compliance regarding safety, leading security, and safety institutions like VdS (Germany) and FG Skadeteknikk (Norway) emphasize the importance of secure weight and anchoring. Specifically, the **tear-away weight**, the weight required to tear the kiosk either out of the wall or out of the floor **must be at least 1000 kilograms**.

Disclaimer: Any Installation without anchoring is breach of installation procedures, infringes insurance terms and conditions and remains the responsibility of the customer.



## Dimensions and Weights

(Illustrations and measurements with mounted, threaded eyelets on the sides)

### s-kiosk unit, outer measurements:

- Height: 183,5cm | 72.3in
- Width: 74cm | 29.1in
- Depth: 29,1cm | 11.5in

### s-kiosk on metal base, outer measurements:

- Height: 191,5cm | 75.4in
- Width: 74cm | 29.1in
- Depth: 29,1cm | 11.5in

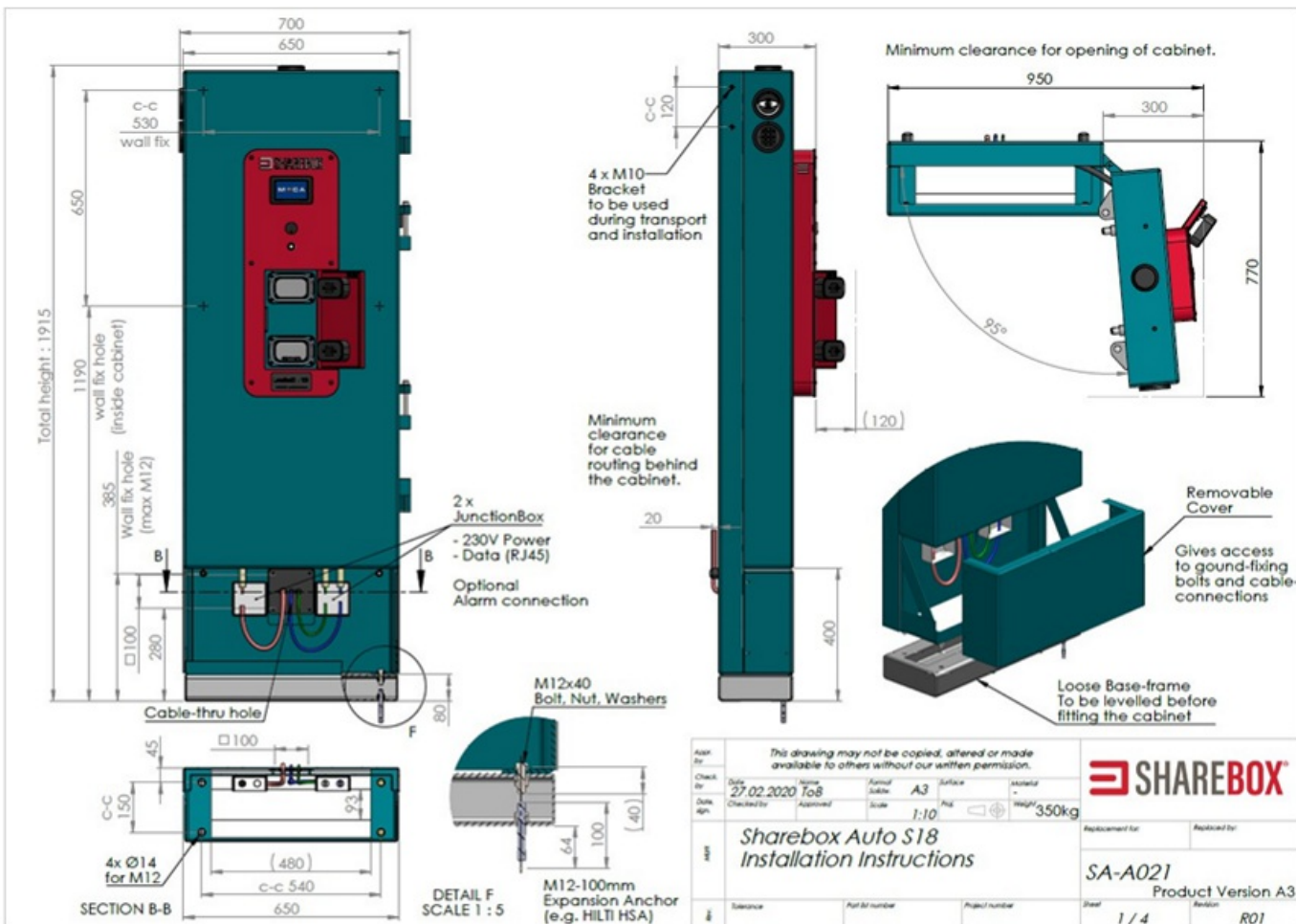
### s-kiosk on concrete base, outer measurements:

- Height: 203,5cm | 80.1in
- Width: 100cm | 39.6in
- Depth: 29,1cm | 11.5in

### Weights:

- Kiosk unit only, weight: 320 kg/ 705 pounds
- Kiosk weight with concrete base: 543 kg/ 1197 pounds
- Concrete base only, weight: 223 kg/ 492 pounds

(All tolerances +/- 5mm and +/- 3kg, +/- 0.197 In and +/- 6.61 pounds)



## 6. Drawings, attachments

### 6.1 SA-A021 Installation Instructions